



# Linked Heritage and AthenaPlus projects for Europeana

Rossella Caffo

Istituto centrale per il catalogo unico delle biblioteche italiane



Uachtaránacht na hÉireann ar  
Chomhairle an Aontais Eorpaigh  
Irish Presidency of the Council  
of the European Union  
[eu2013.ie](http://eu2013.ie)

Dublin, 17 June 2013  
International Digitisation Conference  
"Access, Use, Re - Use"





# **Table of contents**

**ICCU**

**Coordination activity**

**ATHENA**

**Linked Heritage**

**AthenaPlus**

**Outputs, results and more...**



ICCU



# The Central Institute for the Union Catalogue of Italian Libraries

- is the national center which promotes and coordinates **cataloguing and digitisation** activities of the Italian libraries
- is a body of the Italian Ministry for cultural heritage and activities
- is responsible for guiding, producing, adapting and disseminating the standard rules for cataloguing and digitisation of the library heritage
- is committed for the implementation of European digitisation projects (cross-domain approach)





# ICCU Department and activities

## 2 services and 6 departments

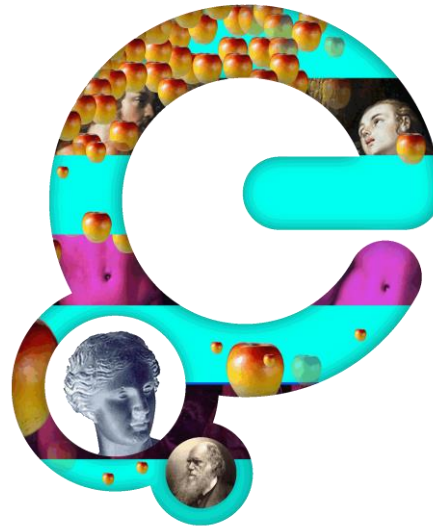
1. Administrative Service
2. Service for the cultural promotion
3. ICT service

### Projects:

- Internet Culturale
- CulturaItalia
- Europeana (Italian partic.)
- World Digital Library (Italian partic.)
- European projects

1. Standards rules for cataloguing and digitisation
2. National Library Service (SBN) 5000 libraries
3. Bibliographic information and activities, Registry of the Italian libraries
4. Digitisation and access to documents
5. Activities concerning bibliography, cataloguing and census of the ancient book
6. Census and management of the Italian bibliography of manuscripts

# European projects towards Europeana with ICCU participation

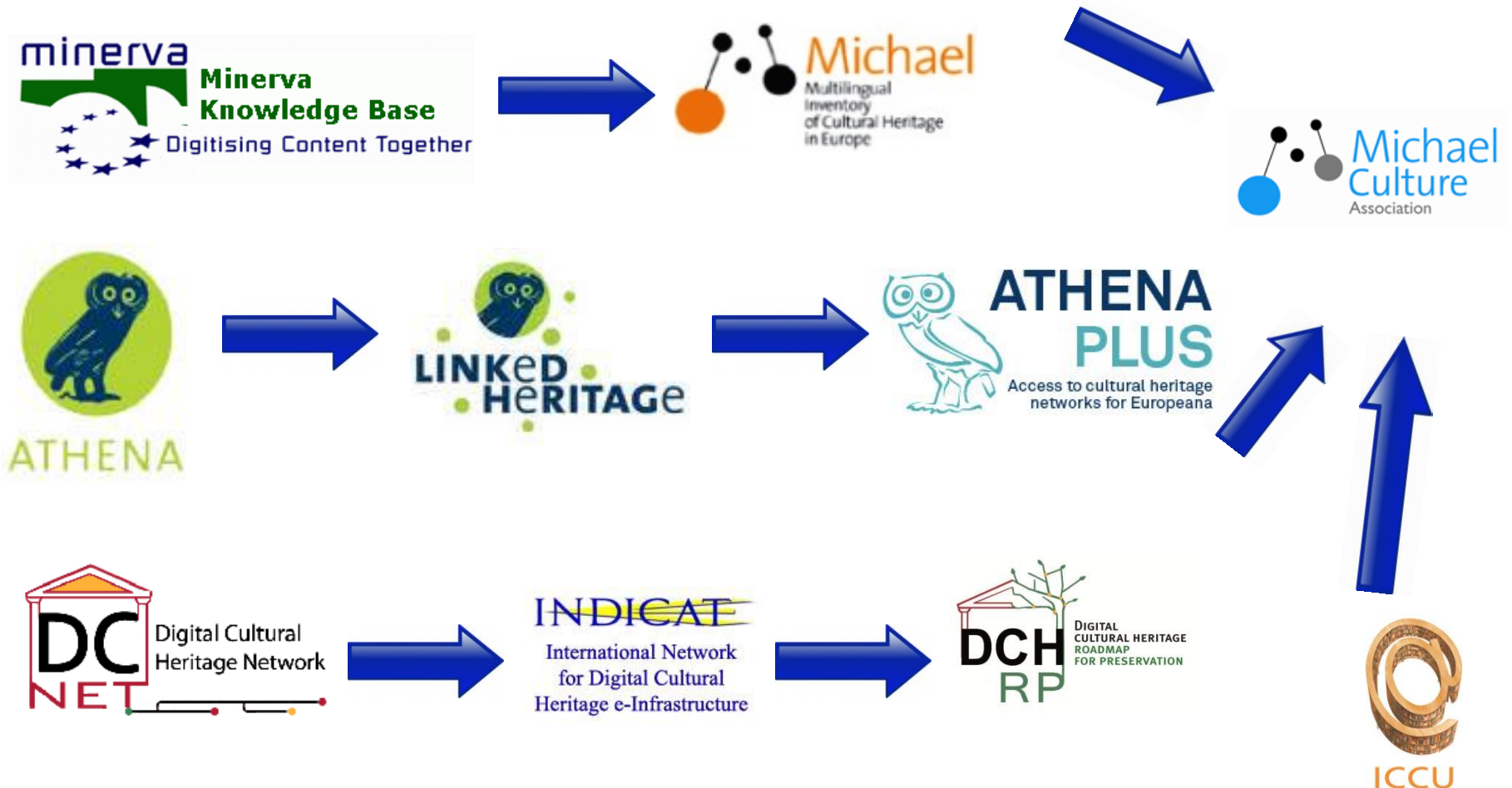


europ<sup>e</sup>ana  
think culture



# A coordination activity started in 2002

A European network cooperating since more than 10 years In the field of cultural heritage





# ATHENA

## Best practice network



24  
N  
þær þu scō  
rū: in uigil  
sā a dore æp

Gmunt



# ATHENA (2008-2011)

Coordinated by ICCU  
Network of European Museums

## **Consortium:**

20 Member States + Russia  
+ Israel

More than 150 museums  
and other memory institutions

## **ATHENA provided**

4 millions data to Europeana  
becoming the first aggregator

## **Main results**

Harvesting format LIDO  
Aggregation tool MINT



*eContentplus*



**ACCESS TO  
CULTURAL HERITAGE  
NETWORKS  
ACROSS EUROPE**

A close-up photograph of a weathered wooden object, possibly a mask or a piece of traditional art. The wood is light brown with visible grain and some cracks. There are three prominent circular holes, each filled with a dark, textured material. Red pigment is applied in streaks and patches across the surface. The background is a solid, light blue-grey color.

**Linked Heritage  
Best practice  
network**



# Linked Heritage (2011-2013)

Coordinated by ICCU

## Consortium:

39 partners from 20 Member States  
+ Israel and Russia

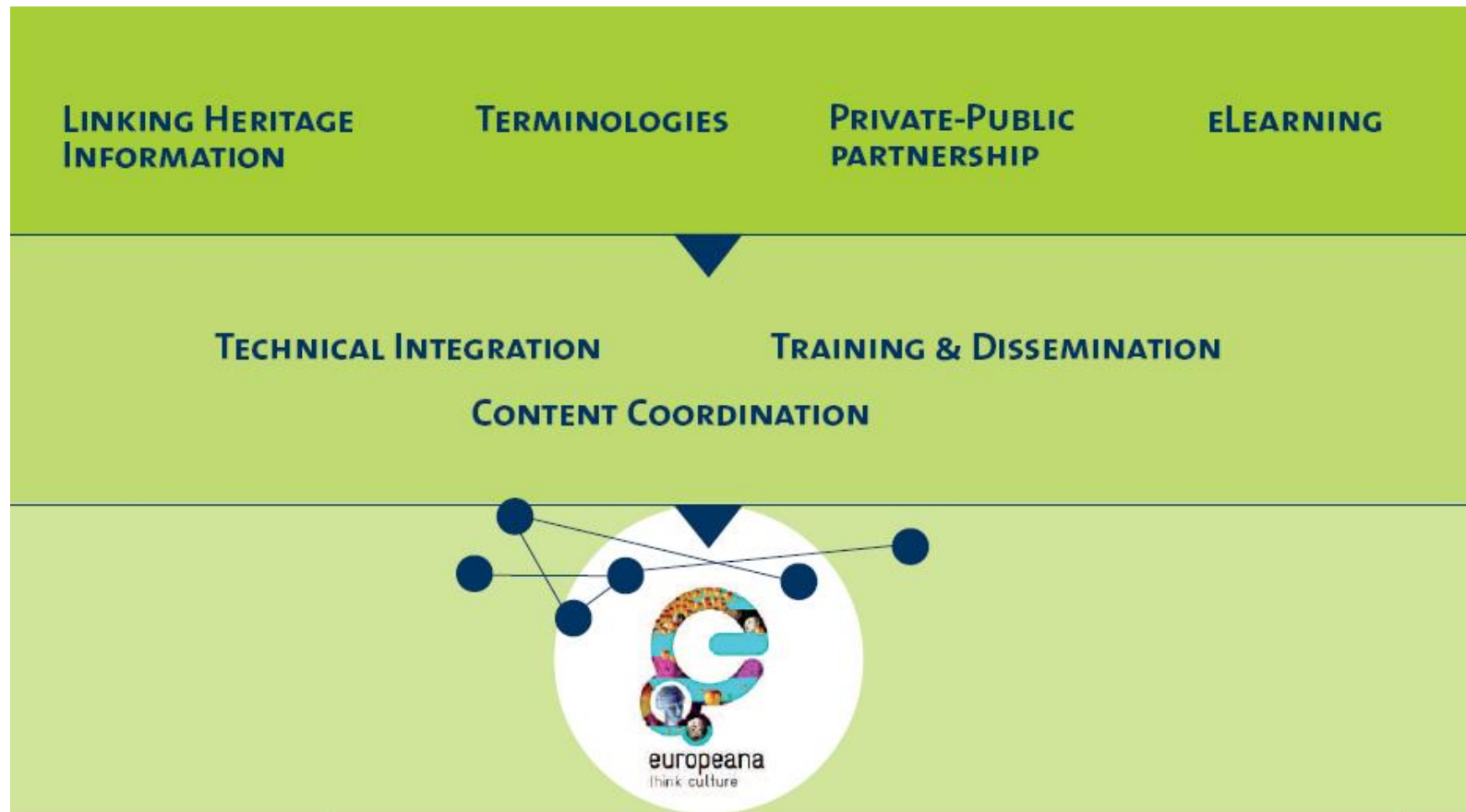
Ministries and government agencies,  
GLAMs, aggregators, research centres,  
publishers, SMEs.

## Main goal:

3 millions data to Europeana  
from intersectoral memory institution



# Linked Heritage (2011-2013)





# Linked Heritage (2011-2013)

- Improvement of the aggregation platform MINT and aggregation workflow
- Linked data to support more expressive semantic processing
- Prototype of a Terminology Management Platform for managing Multilingual and cross-domain terminologies to improve access and retrieval of cultural objects within Europeana
- Persistent identifiers for preventing duplicate records and broken links
- Engagement with the private sector and remediation of their metadata via Europeana
- Training programme and creation of learning objects about the most relevant topics of the project

# AthenaPlus Best Practice Network





# AthenaPlus (2013-2015)

Coordinated by ICCU

## **Consortium:**

40 partners from 21 Member States

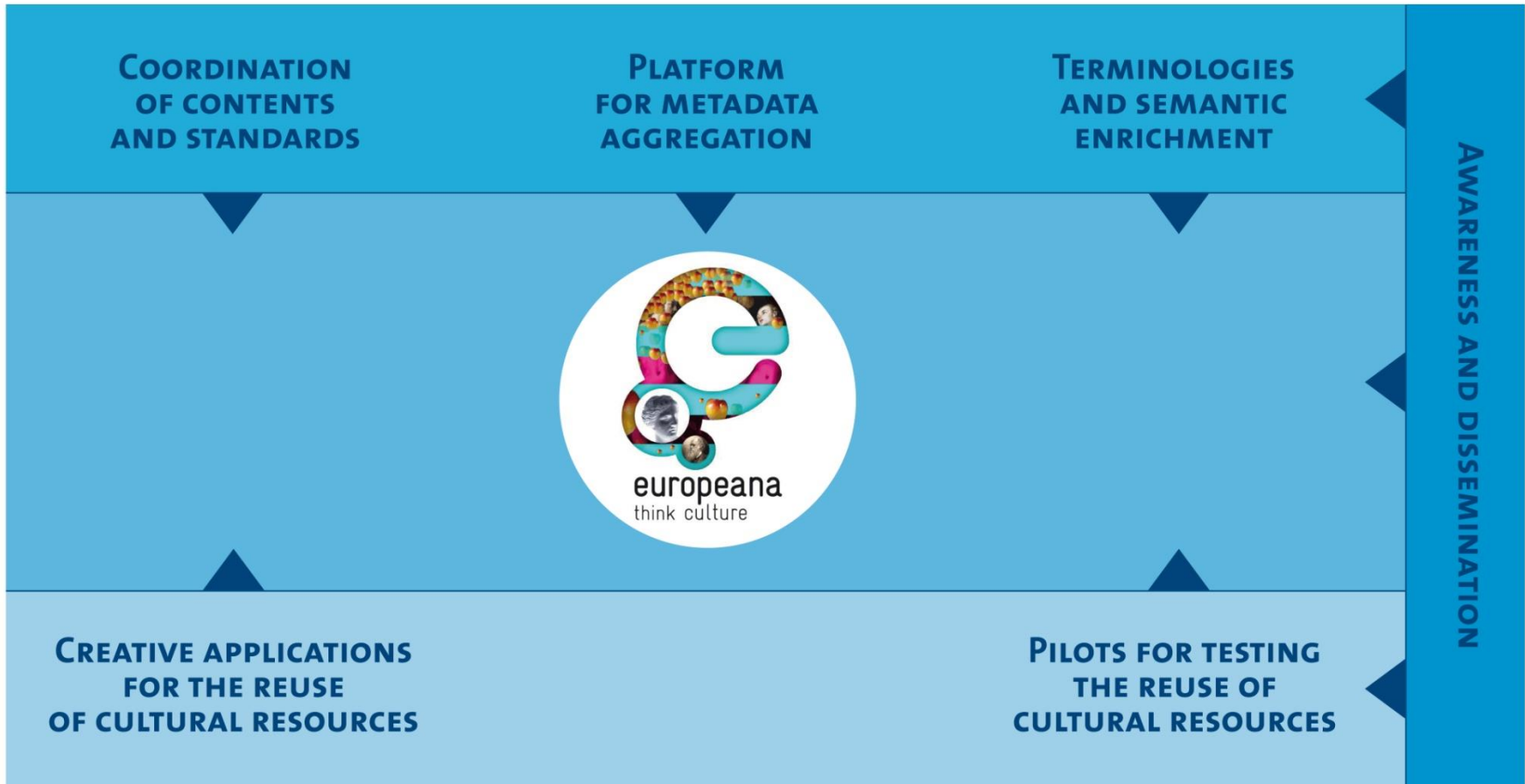
Ministries and government agencies, GLAMs, aggregators, research centres, SMEs.

## **Main goal:**

3,6 millions data to Europeana  
80% from museums



# AthenaPlus (2013-2015)

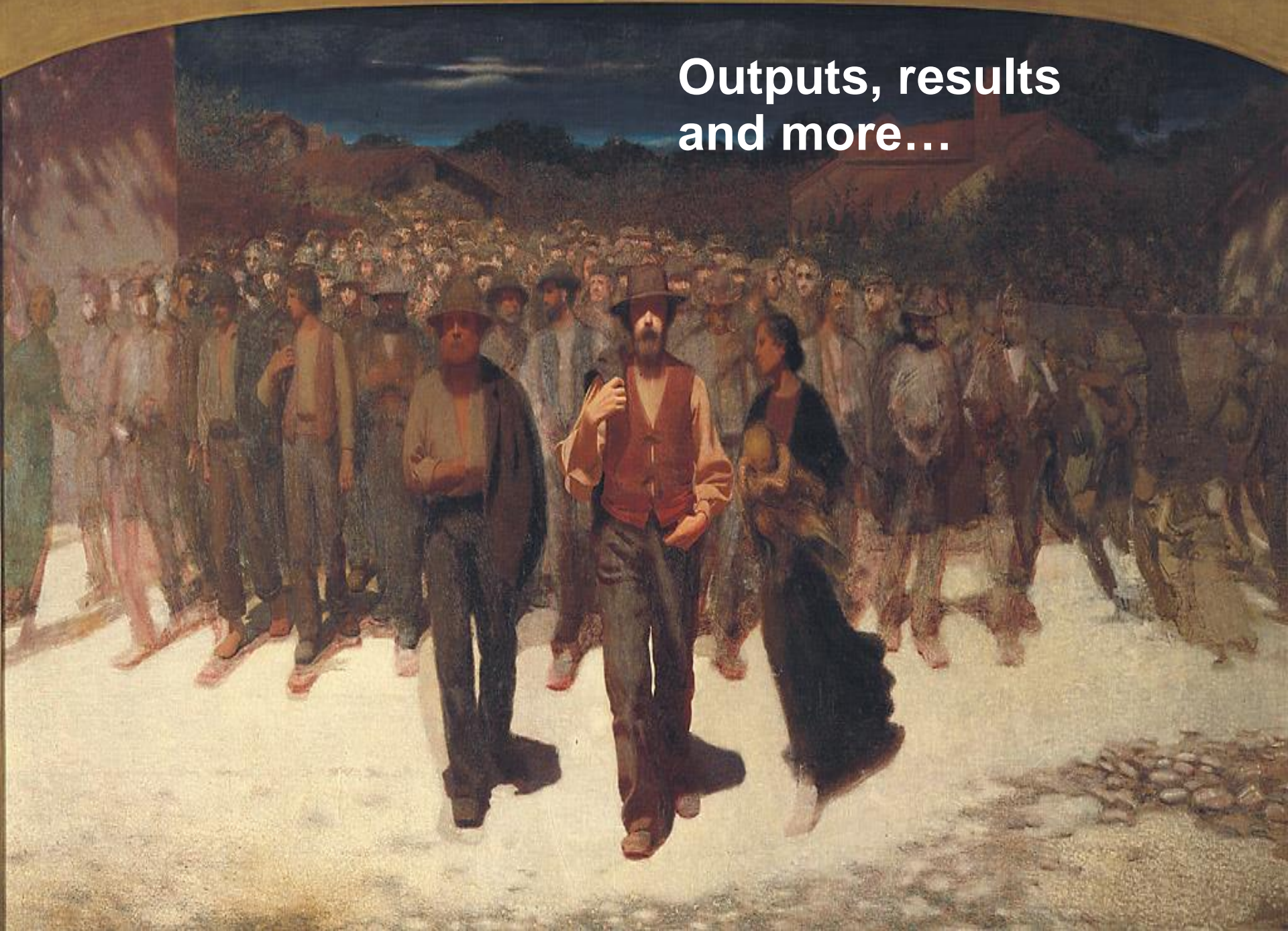




# AthenaPlus (2013-2015)

- Improvement of the aggregation platform MINT
- Semantic enrichment of cultural metadata with Linked Data
- Implementation of the Terminology Management Platform that will serve as an archive of terminologies for the cultural heritage sector
- Development of creative applications for cultural content
- Pilots for testing the creative use of cultural contents (digital exhibitions, tourist routes, education, GIS)
- Networking and training in the European ecosystem

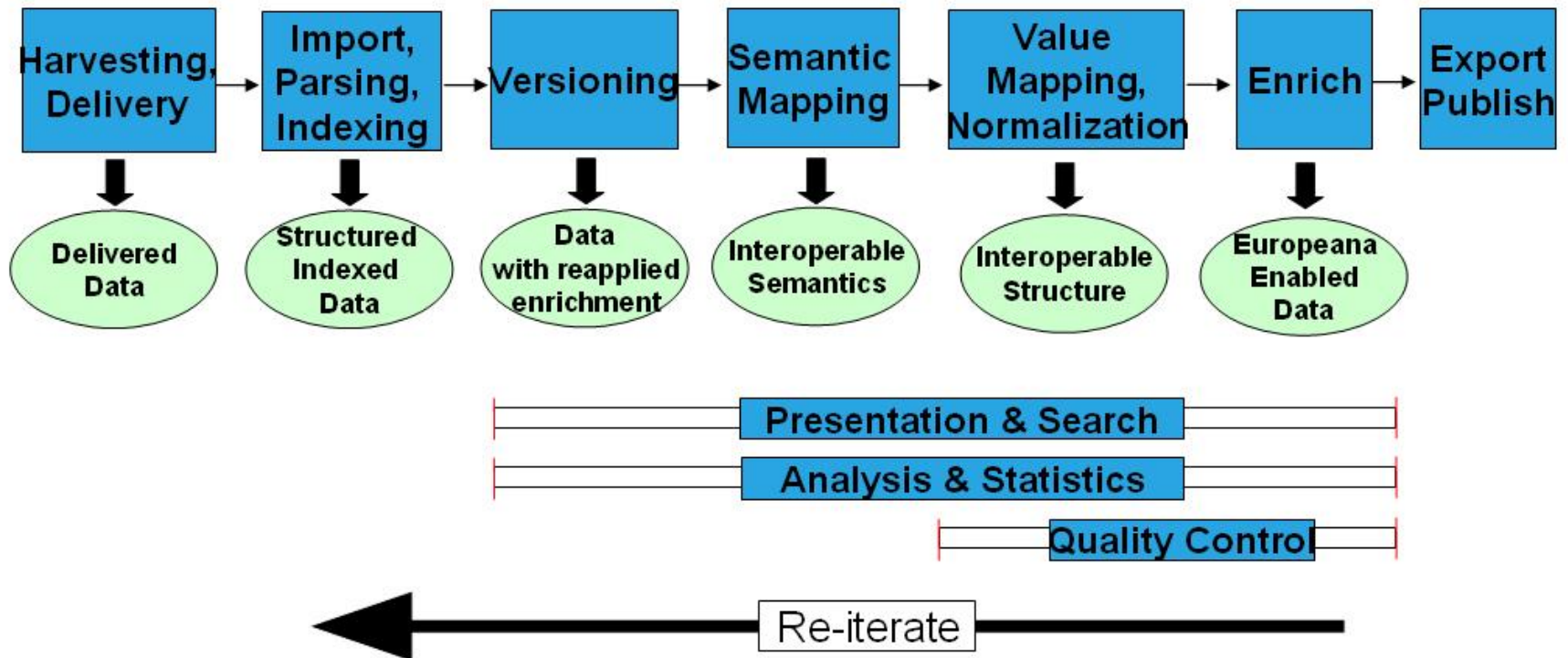
Outputs, results  
and more...





## Aggregation expertise

# The Workflow



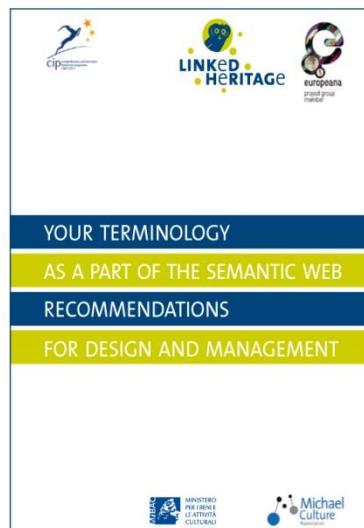
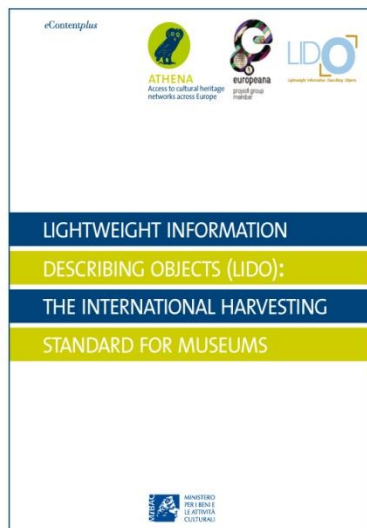
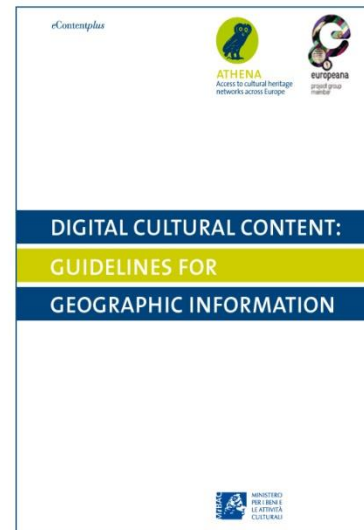
**Image: NTUA**

# Tools and standards





# Publications



29/11/2012

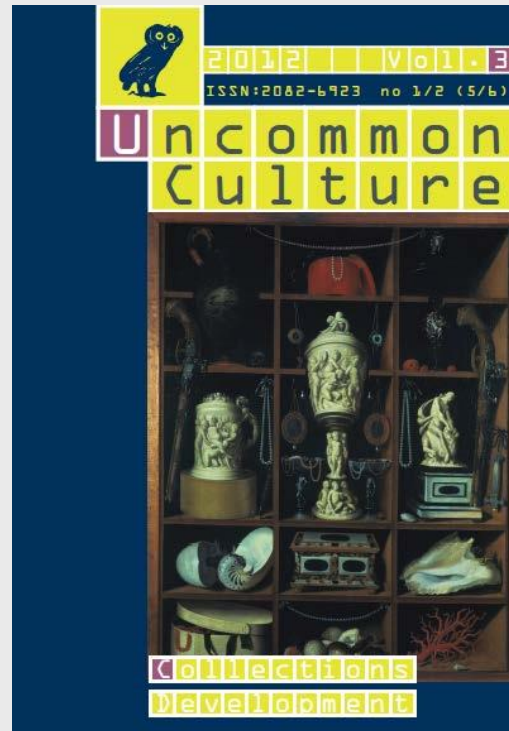
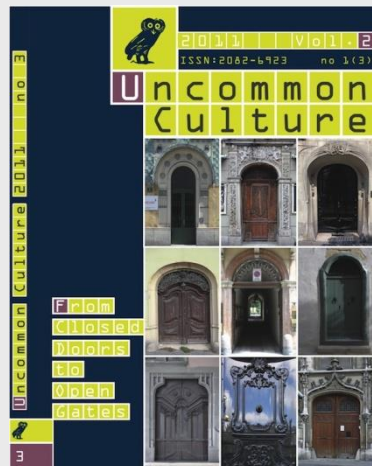
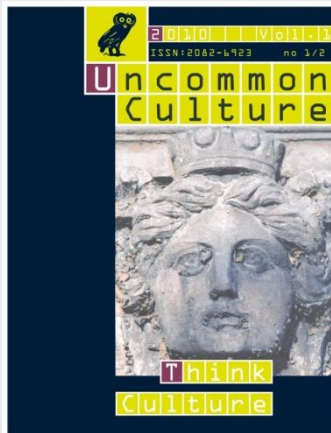


# Uncommon Culture

provides unique perspectives on a rich variety of cultural activities in Europe. Examining cultural institutions and their collections, this magazine gives new insight into diverse cultural activities.

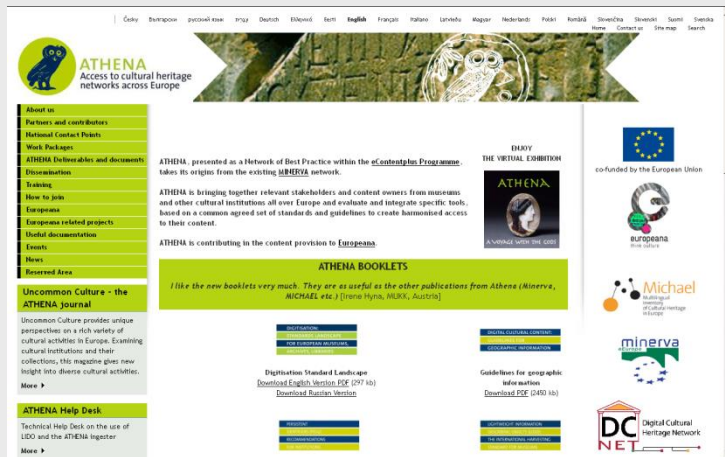
ISSN: 2083-0599  
(online); 2082-6923  
(print)

<http://uncommonculture.org/>





# Websites



www.athenaeurope.org



www.linkedheritage.eu



www.athenaplus.eu

29/11/2012



# Added values

A network that:

- works and learns together
- shares good practices
- has a cross-domain approach
- grows involving new stakeholders

**A community of experts, part of the Europeana ecosystem, contributing to Europeana with content, tools and expertise**







**Thanks!!**

**Rossella Caffo**

**[rcaffo@beniculturali.it](mailto:rcaffo@beniculturali.it)**