

# Fifth EAGLE International Event 2015

Nicosia, 11 March 2015

*AthenaPlus Creative tools  
for the reuse of cultural heritage*

**Maria Teresa Natale (ICCU)**

AthenaPlus Technical coordinator

# About Athena Plus

---

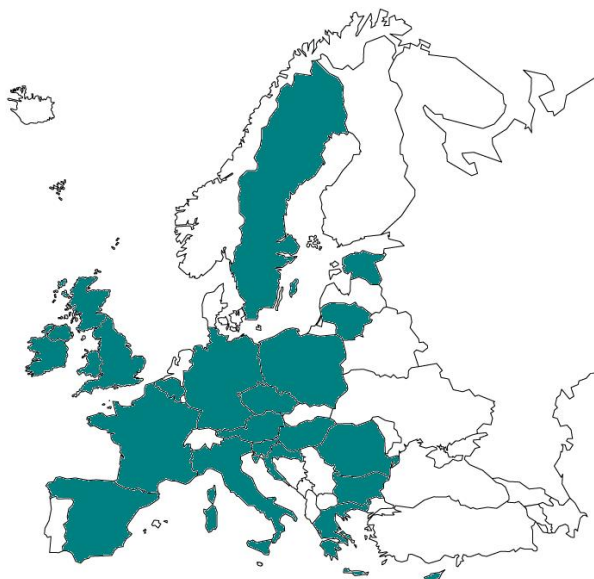
Athena Plus is a **Best Practice Network** funded by the European Commission and coordinated by ICCU.

Its main objectives are:

- Feed Europeana with **3,4 millions** new data
- Create **innovative tools** for digital exhibitions, storytelling, and education
- Develop a **Terminology Management Platform (TMP)** to create and manage multilingual terminologies and thesauri

# AthenaPlus in pills

- **40** partners
- **21** EU member States
- **25** languages
- **30** months (March 2013 – August 2015)



AthenaPlus is the third chapter of a series of successful projects, **ATHENA** and **Linked Heritage**, that since 2008 have aggregated more than 6 millions data for Europeana

# AthenaPlus approach

---

- **Realize** web and mobile applications that can also reuse AthenaPlus and Europeana contents
- **Take into consideration** the needs of cultural institutions and final users as far as digital cultural heritage is concerned
- **Main topics:** digital exhibitions, tourist routes, educational tools, multilingualism

# AthenaPlus creative tools

---

**MOVIO** – digital exhibitions

**Schooltrip** – student tours

**CityQuest** – Treasure Hunt

## Target:

- Archives
- Libraries
- Museums
- Tourist operators
- Cultural organisations
- Schools
- Students
- Researchers

# MOVIO MOSTRE VIRTUALI ONLINE

- <http://movio.beniculturali.it/>
- <http://wiki.athenaplus.eu/index.php/MOVIO>

# Background

## From theory



<http://www.otebac.it/index.php?it/320/mostre-virtuali-online-linee-guida-per-la-realizzazione>

## To practice

The MOVIO project (2012-2014), created by ICCU and funded by Fondazione Telecom Italia, realised a kit to build online virtual exhibitions.



More functionalities are built in AthenaPlus

# The MOVIO KIT

---

The kit consists of:

- a CMS open source for creating digital exhibitions
- a customized APP version for IOS and Android (MovioAPP)
- a catalogue of exhibitions on APP (MOVIO-HUB)
- online tutorial and trianing

The kit is based on the guidelines.

MIT LICENSE

# MOVIO back-end

The back-end of MOVIO is the area where the curators create and manage the content of the digital exhibition.

The back-end offers functionalities to manage:

- **THE LANGUAGE OF THE CMS**
- **THE MULTILINGUALISM OF THE CONTENT**
- **THE GRAPHICAL TEMPLATES**
- **THE ONTOLOGY ASSOCIATED TO THE DIGITAL EXHIBITION**
- **THE MEDIA ARCHIVE**
- **THE USER PROFILES AND THE USERS**
- **THE PAGE TYPES AND THE RELATIVE TOOLS AVAILABLE IN THE CMS**
  - traditional HTML pages
  - different kind of photographic galleries and sliders
  - zoom images
  - timeline
  - interactive maps
  - hotspots on images
  - storyteller
- **THE OPTIMIZATION OF THE META-TAGS FOR SEO**
- **THE INTEROPERABILITY WITH MOVIO HUB AND MOVIO APP**
- **SOME SOCIAL FUNCTIONS**

# MOVIO features



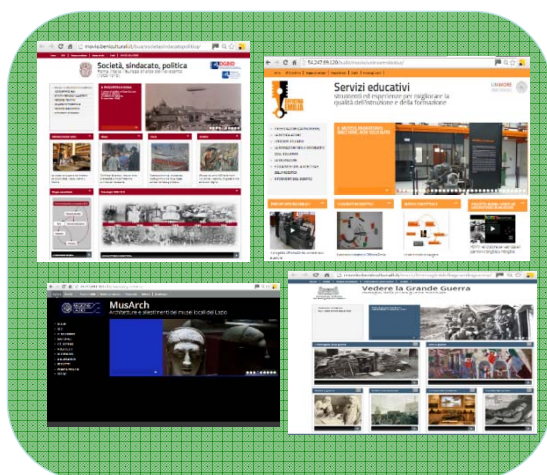
PC



PUBLISH



YOU



The HUB



# MOVIO features

Smartphone



iOS  
Android

VIRTUAL  
EXHIBITIONS

MOVIO-APP

Tablet



EXHIBITIONS  
CATALOGUE

MOVIO-HUB



Una realizzazione:  
**ICCU**  
Istituto Centrale  
per il Catalogo Unico

Percorso: [Home](#) » [Percorsi tematici](#) » 2 Una nazione in movimento

## 2 Una nazione in movimento

Crescita economica, proletariato, Mezzogiorno e crisi della classe politica nell'Italia giolittiana



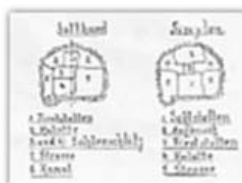
La seconda sezione dell'Archivio Fotografico-Iconografico della Biblioteca Universitaria Alessandrina inquadra quella che potremmo definire la dimensione più propriamente "nazionale" del progetto, quindi l'Italia "giolittiana" raccontata attraverso le immagini dei periodici illustrati posseduti dalla Biblioteca.

Anche in tal caso dall'iniziale *focus* sulle lotte sociali e sindacali si accede progressivamente, grazie ai vari segmenti in cui è articolata la sezione, alla raffigurazione di un'Italia *in movimento*: attraversata da grandi processi di cambiamento – infrastrutturale, urbanistico, nel rapporto fra Stato e società, città e campagne e fra i diversi ceti sociali – quindi di problematica e non uniforme crescita economica, di modernizzazione disomogenea e, al contempo, di crisi acuta della classe politica.

Leggi il saggio completo ([PDF](#), 163 kb)



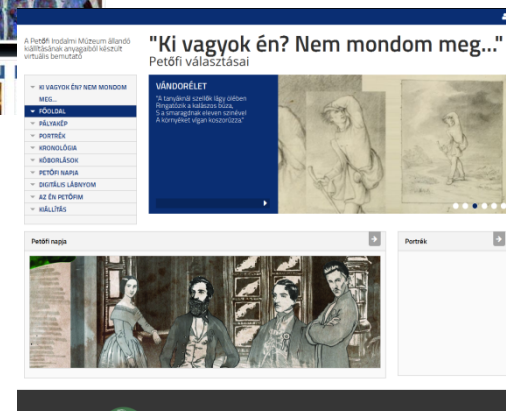
Europeana related contents



Una realizzazione:  
**ICCU**  
Istituto Centrale  
per il Catalogo Unico

# MOVIO numbers

- 14 exhibitions concluded, 30 in progress.
- more than 450 downloads of the software.
- March 2014 - February 2015: Training in Croazia, Estonia, Italy, Germany, Hungary, Romania, Sweden, Latvia, Lithuania.
- More than 800 European experts from GLAMs



# SchoolTrip

- SchoolTrip is a tool that allow teachers and students to plan a school trip
- Through an online interface, the teacher may set up a series of parameters and define the structure of the trip
- The students have at their disposal a virtual space to fill in with practical information, historical info, monument descriptions, etc. They can plan a travel from A to Z, including in their plan cultural heritage. The teacher has a role of supervisor.
- At the end a PDF document can be printed and used as tourist guide.
- MIT licence

<http://wiki.athenaplus.eu/index.php/SchoolTrip>



### Sign in

Username

Teacher



Password

[Forgot your password?](#)

Placeholder



Sign in

[Not a member yet?](#)

## Trip List

	Title ▾	Location
1	FOOTBALCAMP	Brussels -
1	FOOTBALCAMP	Brussels -
1	FOOTBALCAMP	Brussels -

Create New Trip

### Edit Trip



Title

Footbalcamp

Description

This is where a description comes.

Age Group

12-18 ▾

Departure

Brussels

Destination

Barcelona

Update

Edit

Manage Parameters



Edit

Manage Parameters



Edit

Manage Parameters



## Trip List

Title

1

FOOTBA

1

FOOTBA

1

FOOTBA

Create New Trip

### Parameters



Challenge

Find 3 Tapas Bars in...

Edit



Media

Image1.png

Edit



Link

http://www.google.be

Edit



Create New Parameter

Label ?

Here comes a description.

Url ?

Challenge ?

Search for Media ?

Upload Media



Update

## Trip List

1

FOOTBA

1

FOOTBA

1

FOOTBA

Create New Trip

## Groups

×



Mike Junior

mike.junior@school.com

Edit

×

Mike Junior

mike.junior@school.com

Save

×

New password

Confirm New password

Mike Junior




mike.junior@school.com

Edit

×

Create New Member

## Notifications

	<b>Mike Junior</b> created a <b>Record</b> in Footbalcam.	Monday 17 June 2014	<a href="#">Message</a>
	<b>Mike Junior</b> requested for his password.	Monday 17 June 2014	<a href="#">Message</a>
	<b>Mike Junior</b> is now online.	Monday 17 June 2014	<a href="#">Message</a>
⋮			

## Community



**Mike Junior**

Mr. Teacher, What about this topic?

21 June 18:23 PM



**Mike Junior**

Hooray! Where going to Barcelona!!

17 June 14:11 PM



**Mr. Teacher**

Hey guys, This is a community page where we can discuss everything about our trip to Barcelona. Shout if you need help! You guys need to add records with information about the topics I gave you. Success!

17 June 09:30 PM



Enter your message...



Send Message



ATH  
P  
Access to cu  
networks for

## Footbalcamp 2014

### Brussels - Barcelona

From  
22/08 → Until  
29/08

Lorem ipsum dolor sit amet, consectetur adipiscing elit. Morbi facilisis luctus imperdiet. Sed sed consequat lorem. Phasellus dapibus hendrerit arcu non eleifend. eu nisi condimentum, aliquam nisl placerat, interdum lacus.



#### Food & Drinks ▴

Lorem ipsum dolor sit amet, consectetur adipiscing elit. Morbi facilisis luctus imperdiet. Sed sed consequat lorem. Phasellus dapibus hendrerit arcu non eleifend. eu nisi condimentum, aliquam nisl placerat, interdum lacus.

Find 3 Tapa-bars in Barcelona!  
<https://www.google.com>

Manage Records

This is finished!



#### Entertainment ▾



#### Cultural Heritage ▾



#### Nature ▾



#### Hotel & Sleeping ▾



#### Transport ▾

Go to Journal





**ATHENA  
PLUS**

Access to cultural heritage  
networks for Europeana

*The capital of*

**Tilburg - E**

From  
16/02/2015 →

Brussels is the capi  
Centrally located in E  
referred to as 'the capi  
name is enforced b  
presence in the city  
Parliament, European  
several other policy  
office in Brussels. Duri  
discover the city, its hi  
sites, and the Euro

Mark Stevens Save

Title ⓘ

Url ⓘ

Add image

Description ⓘ  
*Fill in the description*


Museums of Art &  
▼

al Instruments  
▼

n Fries  
▼

Is from Brussels  
▼

ng around in the  
▼





Una realizzazione:  
**ICCU**  
Istituto Centrale  
per il Catalogo Unico



# ATHENA PLUS

Access to cultural heritage  
networks for Europeans

## Footbalcamp 2014

1 22/08/2014

2 23/08/2014

3 24/08/2014

4 25/08/2014

5 26/08/2014

6 27/08/2014

1 22/08/2014

08:30

STADION CAMP NOU



Here comes a Title.

Lorem ipsum dolor sit amet, consectetur adipiscing elit. Proin ultrices pretium urna. Integer iaculis, lorem eget lobortis dignissim, massa nulla convallis sem, vel convallis purus purus pulvinar diam. Integer iaculis, lorem eget lobortis dignissim, massa nulla convallis sem, vel convallis purus purus pulvinar diam.

Here comes a Title.

Lorem ipsum dolor sit amet, consectetur adipiscing elit. Proin ultrices pretium urna. Integer iaculis, lorem eget lobortis dignissim, massa nulla convallis sem, vel convallis purus purus pulvinar diam. Donec fermentum ultrices magna eget elementum.

Read More

08:30

STADION CAMP NOU

Here comes a Title.

Lorem ipsum dolor sit amet, consectetur adipiscing elit. Proin ultrices pretium urna. Integer iaculis, lorem eget lobortis dignissim, massa nulla convallis sem, vel convallis purus purus pulvinar diam. Nunc posuere enim id lacus ullamcorper molestie. Donec fermentum ultrices magna eget elementum.

08:30

STADION CAMP NOU



Here comes a Title.

Lorem ipsum dolor sit amet, consectetur adipiscing elit. Proin ultrices pretium urna. Integer iaculis, lorem eget lobortis dignissim, massa nulla convallis sem, vel convallis purus purus pulvinar diam. Integer iaculis, lorem eget lobortis dignissim, massa nulla convallis sem, vel convallis purus purus pulvinar diam.

Here comes a Title.

Lorem ipsum dolor sit amet, consectetur adipiscing elit. Proin ultrices pretium urna. Integer iaculis, lorem eget lobortis dignissim, massa nulla convallis sem, vel convallis purus purus pulvinar diam. Nunc posuere enim id lacus ullamcorper molestie. Donec fermentum ultrices magna eget elementum. Lorem ipsum dolor sit amet, consectetur adipiscing elit.

Nunc posuere enim id lacus ullamcorper molestie. Donec fermentum ultrices magna eget elementum. Lorem ipsum dolor sit amet, consectetur adipiscing elit. Proin ultrices pretium urna.

Integer iaculis, lorem eget lobortis dignissim, massa nulla convallis sem, vel convallis purus purus pulvinar diam.

Here comes a Title.

Lorem ipsum dolor sit amet, consectetur adipiscing elit. Proin ultrices pretium urna. Integer iaculis, lorem eget lobortis dignissim, massa nulla convallis sem, vel convallis purus purus pulvinar diam. Nunc posuere enim id lacus ullamcorper molestie. Donec fermentum ultrices magna eget elementum. Nunc posuere enim id lacus ullamcorper molestie. Donec fermentum ultrices magna eget elementum.



Read Less

08:30

STADION CAMP NOU

Here comes a Title.

Lorem ipsum dolor sit amet, consectetur adipiscing elit. Proin ultrices pretium urna. Integer iaculis, lorem eget lobortis dignissim, massa nulla convallis sem, vel convallis purus purus pulvinar diam. Donec fermentum ultrices magna eget elementum.

Preview

Print

Save as PDF



Una realizzazione:  
**ICCU**  
Istituto Centrale  
per il Catalogo Unico

CityQuest: an urban game aimed at small to medium size heritage organisations in close relation with locality (town, city, ...)

- Web interface on <http://www.cityquest.be>
- Mobile tablet app for going around the city (Android & iPad version, internetless version)
- Publication to app: empty shell downloaded, publish = key
- MIT license

[Sign In](#)

## Create your own city quest in 5 minutes!

City Quest allows you to easily create a quest online, and publish an iPad app as final result.

Send your visitors around the city to discover items from your collection and the locations they are connected to.

[Register now](#)

*City Quest* is an open source application, licensed under [JORIS?].

It was created by **PACKED vzw** in the framework of the CIP ICT-PSP **AthenaPlus** project.

Full name

Mike Junior

Email

Organisation

Adress



Co-funded by  
the European Union.

[Register](#)

\*By clicking you are agreeing to the Terms and Conditions.

Una realizzazione:  
**ICCU**  
Istituto Centrale  
per il Catalogo Unico



**ATHENA  
PLUS**

Access to cultural heritage  
networks for Europeana

iPad



12.00pm



## Explore Amsterdam



### Explore Amsterdam

*Aliquam dictum laoreet odio nec tincidunt. Mauris ut ex sem. Maecenas accumsan enim quis mauris lobortis iaculis.*

### DISCLAIMER

*Aliquam dictum laoreet odio nec tincidunt. Mauris ut ex sem. Maecenas accumsan enim quis mauris lobortis iaculis. Mauris ut ex sem. Maecenas accumsan enim quis mauris lobortis iaculis.*

### HOW DOES IT WORK?



Find the location by following  
the instructions and hints.



The QR provides some infor-  
mation about the location.



Found the location? Search for  
a QR and scan it!



The quest is against the clock.  
Be efficient and finish in time!

**READY ? FIND THE FIRST ITEM**



Una realizzazione:  
**ICCU**  
Istituto Centrale  
per il Catalogo Unico



**ATHENA  
PLUS**

Access to cultural heritage  
networks for Europeana

iPad



12.00pm



## Explore Amsterdam



### SMOOTH STEEL

*Lorem ipsum dolor sit amet, consectetur adipiscing elit. Donec vestibulum venenatis nulla, sed laoreet est. Mauris molestie enim vitae cursus varius. Eiam volutpat fringilla diam, vel pharetra risus. Nam convallis id ligula nec malesuada. Fusce dictum velit vel elit venenatis sagittis.*

*In elementum nec orci convallis finibus. Suspendisse potenti. Nunc et rutrum purus, in tincidunt neque. Vivamus euismod molestie elit a condimentum. Aenean eget porttitor velit. Ut ornare tincidunt tortor.*

I NEED A HINT

FINISH THIS ITEM LATER

FOUND IT! LET'S SCAN IT!



Una realizzazione:  
**ICCU**  
Istituto Centrale  
per il Catalogo Unico



**ATHENA  
PLUS**

Access to cultural heritage  
networks for Europeans

iPad



12.00pm



## Explore Amsterdam



**HOORAY!! YOU HAVE FOUND THE LOCATION.**

### ANNE FRANK HUIS

*Lorem ipsum dolor sit amet, consectetur adipiscing elit. Nulla hendrerit fringilla arcu quis pharetra. Maecenas euismod at velit non aliquet. Vivamus porta nisl justo, eget tincidunt diam aliquam ut. Donec ut leo orci. Etiam hendrerit justo nec massa aliquet placerat non id nulla. Sed in lobortis lacus. Morbi at hendrerit magna. Mauris vehicula porta enim ac laoreet. Phasellus vitae lobortis lorem. Nulla facilisi. Vestibulum euismod id quam at vestibulum.*

*In eu mauris in arcu tincidunt maximus. Pellentesque habitant morbi tristique senectus et netus et malesuada fames ac turpis egestas. Integer ac eros lorem. Praesent tristique, velit rhoncus sodales scelerisque, felis libero bibendum odio, quis varius eros mi eget ipsum. Proin tellus nunc, congue at finibus vitae, sagittis eu felis. Aliquam eu tincidunt lacus. Praesent ut tincidunt felis. Phasellus in massa a diam elementum porta vel dignissim dui. Integer iaculis tortor non lectus aliquet hendrerit. Etiam eget neque a justo imperdiet mollis pretium ac arcu. Etiam id metus nibh. Interdum et malesuada fames ac ante ipsum primis in faucibus. Vestibulum ante ipsum primis in faucibus orci luctus et ultrices posuere cubilia Curae; Fusce luctus pellentesque arcu at consectetur. Donec egestas, est at hendrerit maximus, quam nulla ultrices arcu, in rhoncus turpis elit vel sapien.*

**FIND THE NEXT ITEM!**



Una realizzazione:  
**ICCU**  
Istituto Centrale  
per il Catalogo Unico



**ATHENA  
PLUS**

Access to cultural heritage  
networks for Europeana

iPad

12.00pm



## Explore Amsterdam



**HOORAY!! YOU HAVE COMPLETED THIS QUEST.**

### YOUR FINAL STATS

**1:22:53**

YOUR TIME

**7/7**

TOTAL ITEMS FOUND

**2**

TOTAL HINTS USED

**2/2**

SKIPPED ITEMS

**22**

TOTAL KM

**2**

RANKING

**FIND YOUR WAY BACK TO HET RIJKSMUSEUM**

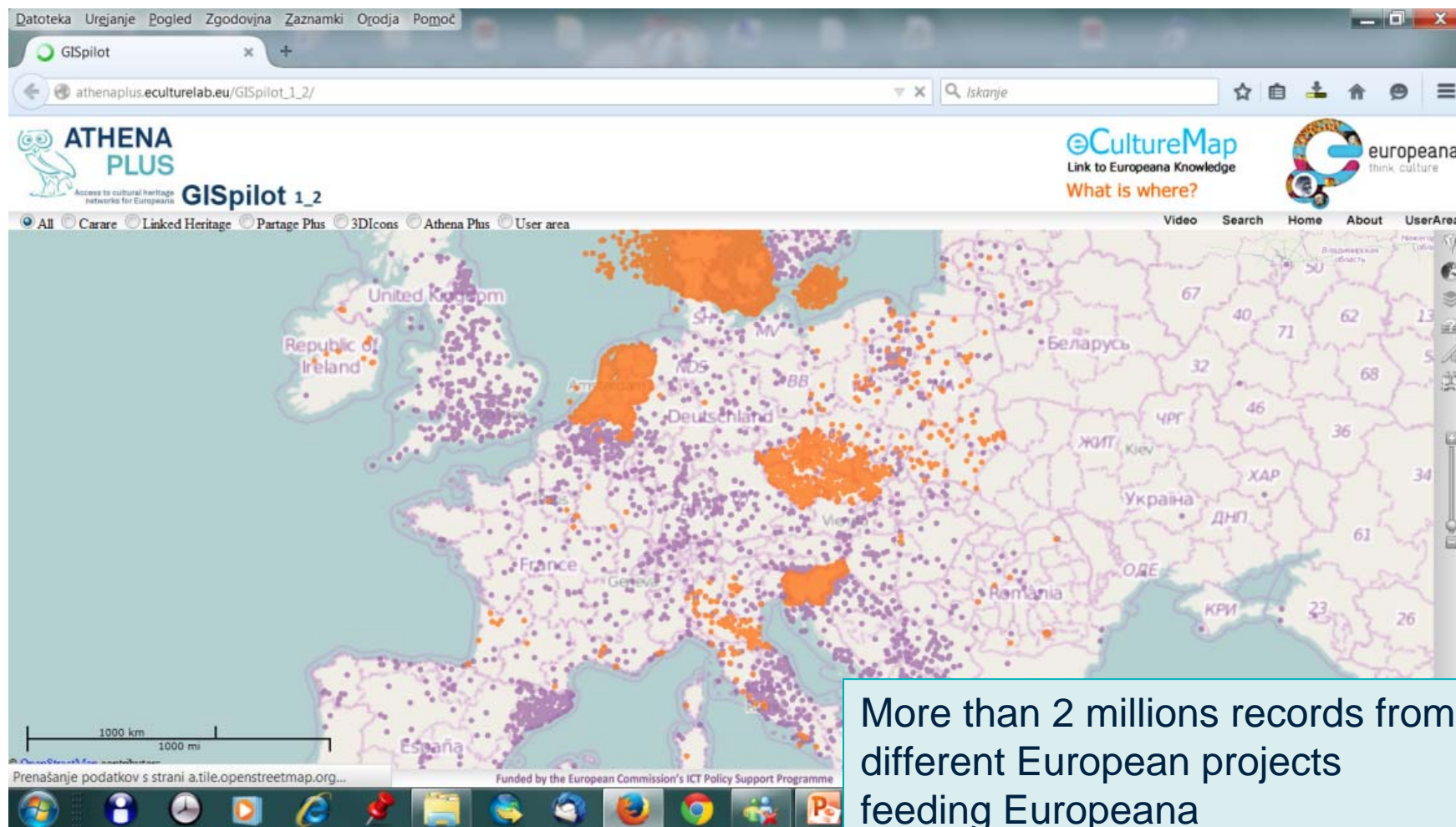


Una realizzazione:

**ICCU**

Istituto Centrale  
per il Catalogo Unico

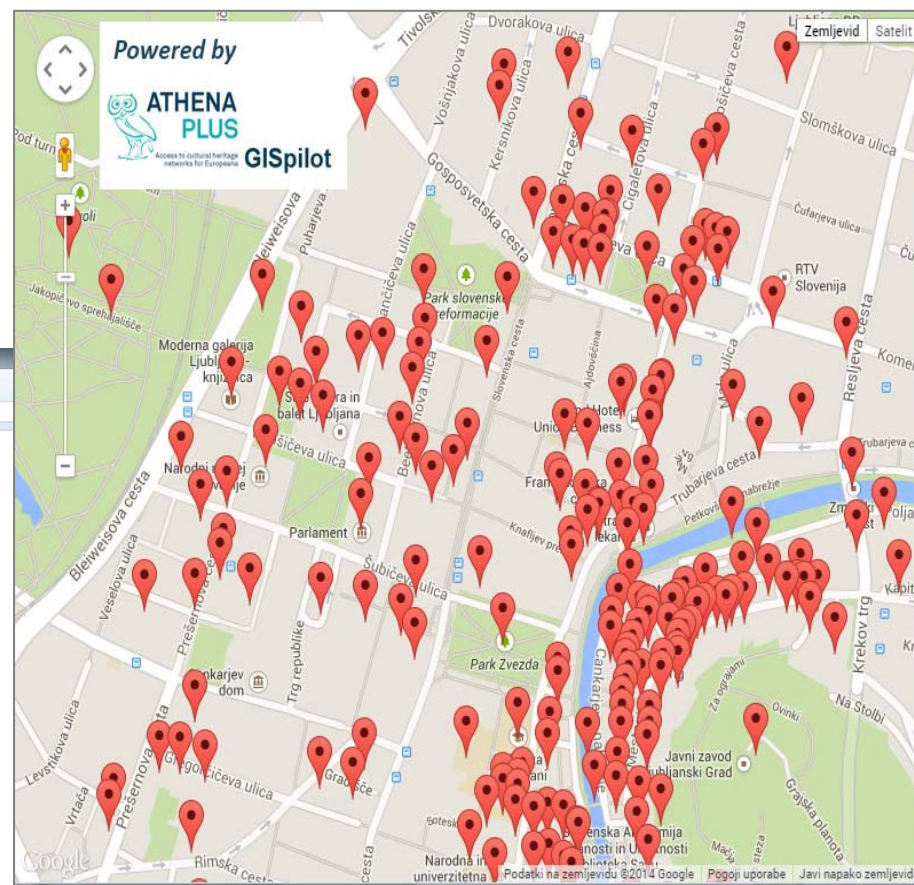
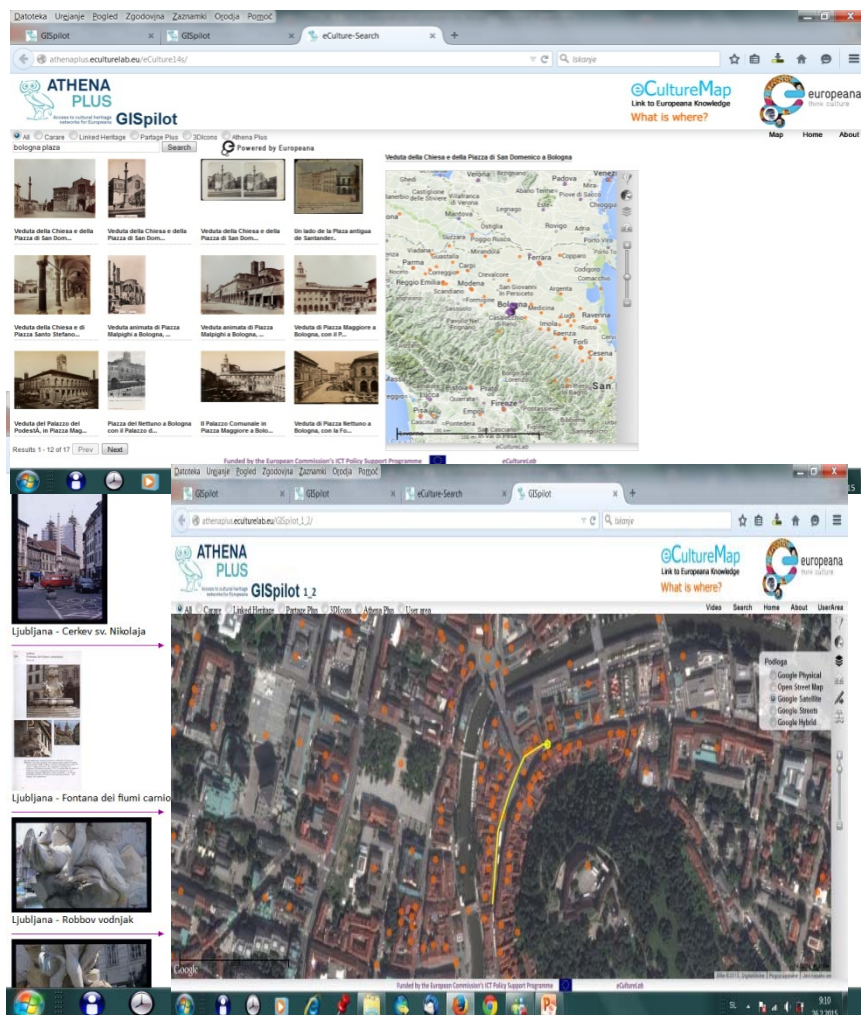
# AthenaPlus eCultureMap



More than 2 millions records from different European projects feeding Europeana

[http://athenaplus.eculturelab.eu/GISpilot\\_1\\_2](http://athenaplus.eculturelab.eu/GISpilot_1_2)

# AthenaPlus eCultureMap



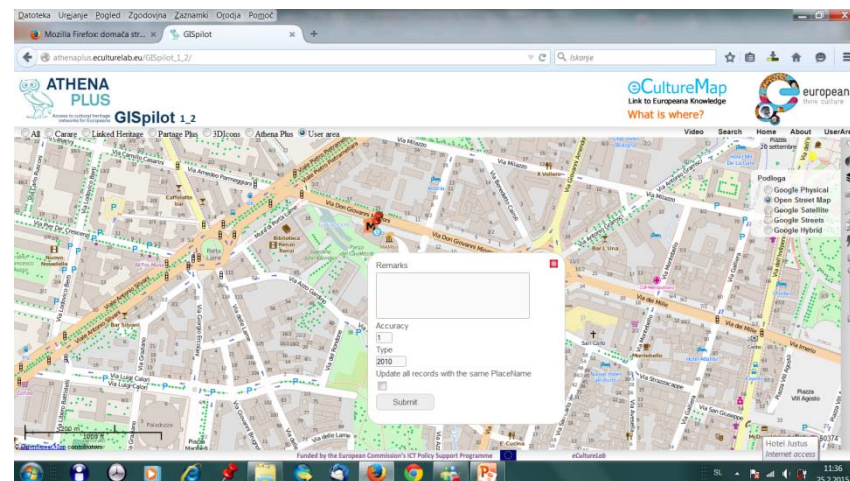
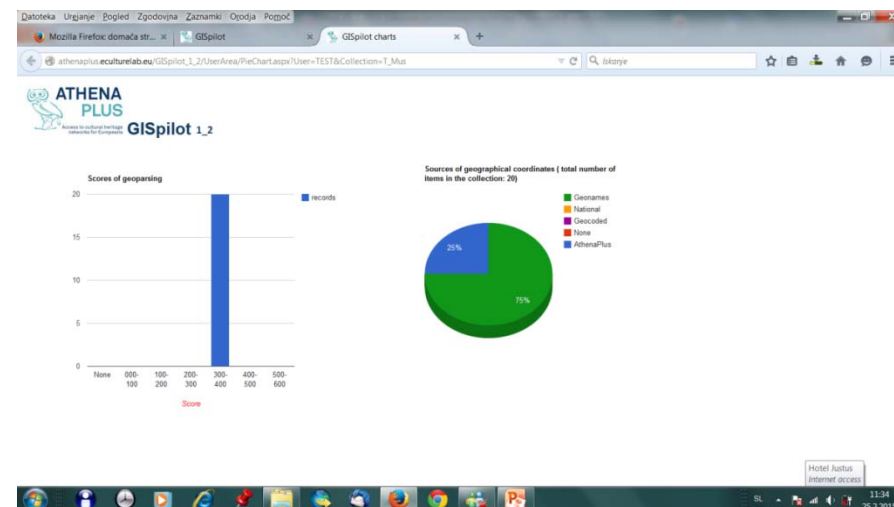
# Geoparsing – elaboration of geographic coordinates



[http://athenaplus.eculturelab.eu/GISpilot\\_1\\_2/](http://athenaplus.eculturelab.eu/GISpilot_1_2/)

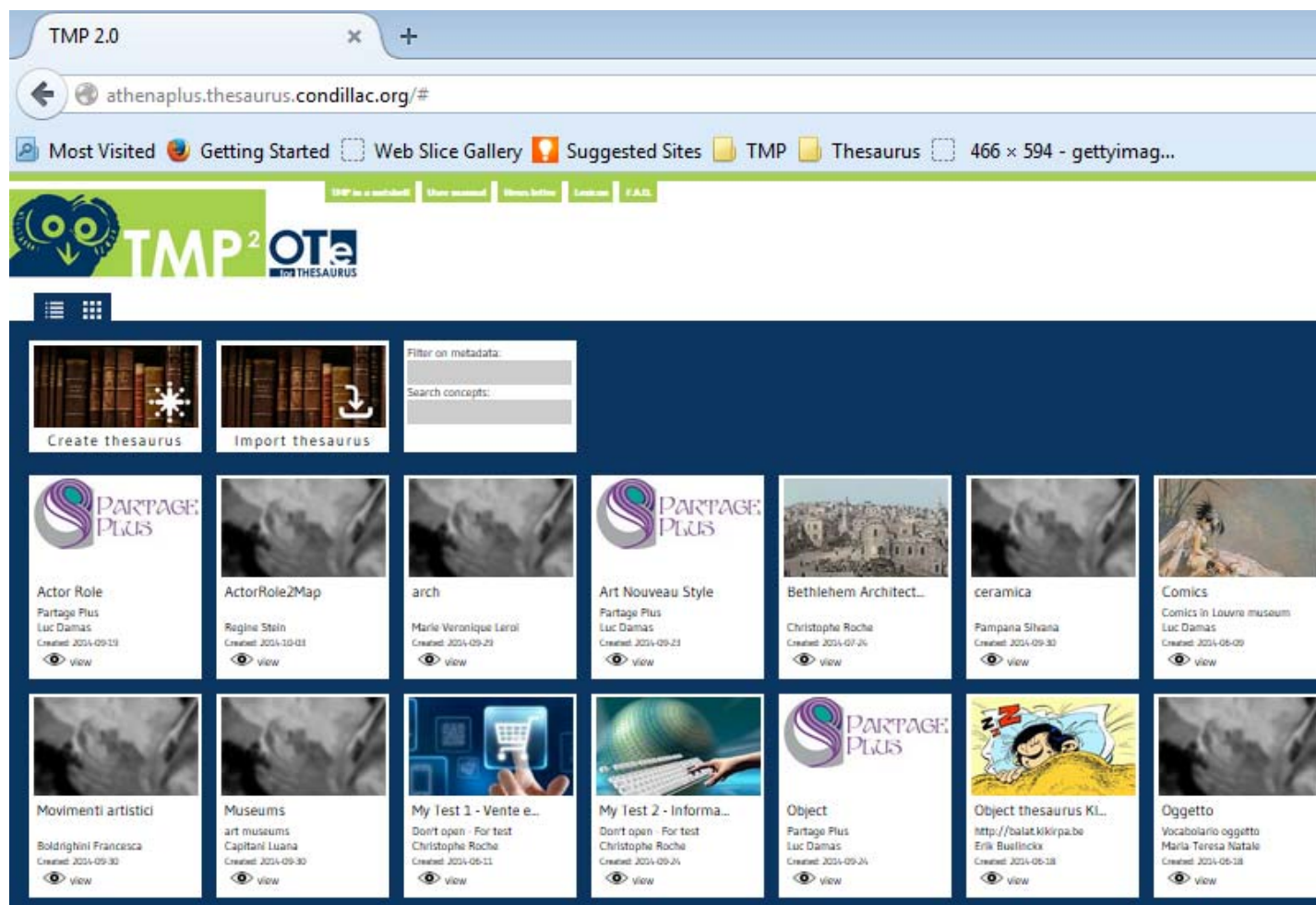
Username: test

Password: test



# Athenaplus e and multilingualism

## Terminology Management Platform (TMP)



TMP 2.0

athenaplus.thesaurus.condillac.org/#

Most Visited Getting Started Web Slice Gallery Suggested Sites TMP Thesaurus 466 x 594 - gettyimag...

TMP is a multilingual platform | Share resources | View thesauri | Contact | FAQ

**TMP<sup>2</sup> OTe**  
THE SAURUS

Filter on metadata:  
Search concepts:

Create thesaurus Import thesaurus

**Actor Role**  
Partage Plus  
Luc Damas  
Created: 2014-09-19  
view

**ActorRole2Map**  
Regine Stein  
Created: 2014-10-01  
view

**arch**  
Marie Veronique Leroy  
Created: 2014-09-23  
view

**Art Nouveau Style**  
Partage Plus  
Luc Damas  
Created: 2014-09-23  
view

**Bethlehem Architect...**  
Christophe Roche  
Created: 2014-07-26  
view

**ceramica**  
Pampana Silvana  
Created: 2014-09-30  
view

**Comics**  
Comics in Louvre museum  
Luc Damas  
Created: 2014-06-09  
view

**Movimenti artistici**  
Boldinghini Francesca  
Created: 2014-09-30  
view

**Museums**  
art museums  
Capitani Luana  
Created: 2014-09-30  
view

**My Test 1 - Vente e...**  
Don't open - For test  
Christophe Roche  
Created: 2014-06-11  
view

**My Test 2 - Informa...**  
Don't open - For test  
Christophe Roche  
Created: 2014-09-26  
view

**Object**  
Partage Plus  
Luc Damas  
Created: 2014-09-26  
view

**Object thesaurus KL**  
http://balat.kikirpa.be  
Erik Businckx  
Created: 2014-06-18  
view

**Oggetto**  
Vocabolario oggetto  
Maria Teresa Natale  
Created: 2014-06-18  
view

<http://athenaplus.thesaurus.condillac.org/>

# About TMP

---

Through TMP a cultural institute may:

1. create or upload its terminology/thesaurus
2. map terms with terms of other (multilingual) terminologies/thesauri
3. export its thesaurus or an enriched theaurus in SKOS or RDF

The TMP integrates standards ISO 25964-1 and ISO 25964-2 on thesauri.

The TMP is under testing and will be open to all.

Does EAGLE want to test the TMP with its terminologies?

---

# Manage a thesaurus

en ▼ [Icons] [Search Box]

nl ▼

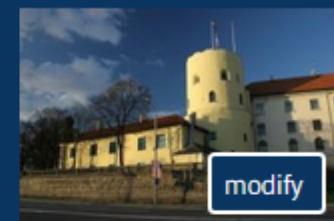


- **Monument**
  - NT **Castel**
    - NTI **Riga Castle**
  - NT **Church**
    - NT **Cathedral**
      - NTI **Riga Cathedral**
    - NT **St. Peter's Church**
  - NTG **Freedom Monument**
- **Residential building**
  - NT **Brivibas Street 99**
  - NTI **Alberta Street 8**
- **Societies' building**
  - NTI **House of the Blackheads**

## Proper name

< Slot van Riga >

[thesaurusconcept\\_riga\\_castle\\_1424708604069](#)



Broaders +

BTI < Kasteel > -

Narrowers +

Related +

Mapping

## Term

Preferred term

Slot van Riga

Non-preferred terms

Kasteel van Riga



Una realizzazione:  
**ICCU**  
Istituto Centrale  
per il Catalogo Unico



ATHENA

Access to cultural heritage  
networks for Europeana

# Import CSV

KMKG-MRAH\_Nom de l'Objet\_2014\_TMP - Microsoft Excel

	A	B	C	D	E	F	G
1	CONCEPTSCHEME: KMKG-MRAH OBJECT NAME THESAURUS						
2	ID	BROADER	RELATED	TYPE	prefLabel@fr	altLabel@fr	scopeNote@fr
3	KMKG2014ObjectName	BT	RT	Concept scheme			
4	300263552	KMKG2014ObjectName	Hierarchie-Micro thesaurus	Architecture			Construction ou partie d'une construction faite par homme. En général, le uniquement à des constructions de telles dimensions qu'elles peuvent abriter d
5	300004790	300263552		Concept	Construction		Dénomination générale pour toutes sortes de bâtiments, en cours de construc
6	300006101	300004790		Concept	Barrage (rétenteur)		Dénomination pour des digues transversales construites dans des voies d'eau pr niveau de l'eau ou pour mesurer ou dévier le cour
7	300006102	300006101		Concept	Déversoir		Digues ou remparts construits pour dévier le courant d'eau e
8	KMKG201400001	300006101		Concept	Pompe à eau		
9	300006191	300006101		Concept	Réservoir		Terme utilisé pour référer à des endroits ou des citernes pour collecte substan
10	300133704	300004790		Node label	Composant de bâtiment		
11	300002588	300133704		Concept	Balcon		Plateforme avec grillage qui se trouve à l'extérieur d'un bâtiment. N'utili constructions pareilles à l'intérieur d'un bâtiment que si elles ont une l
12	300076641	300133704		Concept	Portail (espace extérieur)		Utilisé pour désigner l'espace monumental limitrophe à un bâtiment par le
13	300083076	300133704		Concept	Portail (espace intérieur)		Utilisé pour désigner des vestibules situés immédiatement avant ou après l





ATHENA

Access to cultural heritage  
networks for Europeana

# Mapping page

## Monuments in Riga

filter...

### Monument

#### Castel

Riga Castle

#### Church

##### Cathedral

Riga Cathedral

St. Peter's Church

#### Freedom Monument

### Residential building

Brivibas Street 99

Alberta Street 8

### Societies' building

House of the Blackheads

## Art Nouveau Style

filter...

### European

#### Aesthetic Movement

**Art Nouveau**

Arte Joven

Arte Nova

Arte Nuova

Bandwurmstil

Belgische (style)

Dragestil

Glasgow style

Jugend (Finnish Art  
Nouveau)

Jugend (Swedish Art  
Nouveau)

Jugendstil

Kontrajugend

La Libre Esthétique

Le Style des Vingt

Ligne Belge

Młoda Polska





# SKOS export

## - <rdf:RDF>

- <skos:Concept rdf:about="[http://athenaplus.thesaurus.condillac.org/thesaurusconcept\\_furniture\\_1424773966715](http://athenaplus.thesaurus.condillac.org/thesaurusconcept_furniture_1424773966715)">

<skos:prefLabel xml:lang="en">Furniture</skos:prefLabel>

<skos:prefLabel xml:lang="nl">Meubel</skos:prefLabel>

<skos:broader rdf:resource="[http://athenaplus.thesaurus.condillac.org/thesaurusconcept\\_furniture\\_1424773966715](http://athenaplus.thesaurus.condillac.org/thesaurusconcept_furniture_1424773966715)">

<skos:broader rdf:resource="[http://athenaplus.thesaurus.condillac.org/thesaurusconcept\\_furniture\\_design\\_1411586048119](http://athenaplus.thesaurus.condillac.org/thesaurusconcept_furniture_design_1411586048119)">

<skos:broader rdf:resource="[http://athenaplus.thesaurus.condillac.org/thesaurusconcept\\_furniture\\_1424773966715](http://athenaplus.thesaurus.condillac.org/thesaurusconcept_furniture_1424773966715)">

<skos:broader rdf:resource="[http://athenaplus.thesaurus.condillac.org/thesaurusconcept\\_furniture\\_1424773966715](http://athenaplus.thesaurus.condillac.org/thesaurusconcept_furniture_1424773966715)">

<skos:broader rdf:resource="[http://athenaplus.thesaurus.condillac.org/thesaurusconcept\\_furniture\\_1424773966715](http://athenaplus.thesaurus.condillac.org/thesaurusconcept_furniture_1424773966715)">

- <skos:scopeNote xml:lang="nl">

Furniture is the mass noun for the movable objects intended to support various human activities such as seating (e.g., chairs, stools and sofas) and sleeping (e.g., beds). Furniture objects at a convenient height for work (as horizontal surfaces above the ground, such as tables and desks), or to store things (e.g., cupboards and shelves). Furniture can be a pro considered a form of decorative art. In addition to furniture's functional role, it can serve a symbolic or religious purpose. It can be made from many materials, including metal, p Furniture can be made using a variety of woodworking joints which often reflect the local culture (Wikipedia).

</skos:scopeNote>

</skos:Concept>

- <skos:Concept rdf:about="[http://athenaplus.thesaurus.condillac.org/thesaurusconcept\\_bed\\_1424774588085](http://athenaplus.thesaurus.condillac.org/thesaurusconcept_bed_1424774588085)">

<skos:prefLabel xml:lang="en">Bed</skos:prefLabel>

<skos:prefLabel xml:lang="nl">Bed</skos:prefLabel>

<skos:broader rdf:resource="[http://athenaplus.thesaurus.condillac.org/thesaurusconcept\\_furniture\\_1424773966715](http://athenaplus.thesaurus.condillac.org/thesaurusconcept_furniture_1424773966715)">

</skos:Concept>

- [www.athenaplus.eu](http://www.athenaplus.eu)
- <https://twitter.com/AthenaPlusEU>
- <http://linkd.in/19XwWOz>
- [info@athenaplus.eu](mailto:info@athenaplus.eu)



# Thanks

**Maria Teresa Natale**  
**[mariateresa.natale@gmail.com](mailto:mariateresa.natale@gmail.com)**

**ICCU**

**[www.athenaplus.eu](http://www.athenaplus.eu)**